

FpVTE 2012
FINGERPRINT VENDOR TECHNOLOGY EVALUATION
PARTICIPANT'S GUIDE
FINAL VERSION 0.4

CRAIG WATSON
WAYNE SALAMON
GREGORY FIUMARA

IMAGE GROUP
INFORMATION ACCESS DIVISION
INFORMATION TECHNOLOGY LABORATORY

NIST
National Institute of
Standards and Technology
U.S. Department of Commerce

JULY 3, 2012

Contents

1	Introduction	1
1.1	Background	1
1.2	Purpose	1
1.3	Audience	2
1.4	Application Scenarios	2
1.5	Timeline	4
1.6	Offline Testing	4
1.7	Phased Testing	4
1.7.1	Interim Reports	4
1.7.2	Publication of results	5
1.8	Reporting of Failure to Enroll or Acquire (FTE, FTA)	5
1.9	Matching of Empty, Broken, and Missing Templates	5
1.10	Reporting of Template Size	5
1.11	Runtime Memory Usage	6
1.12	Reporting of Computational Efficiency	6
1.13	Exploring the Accuracy-Speed Trade-Off	6
1.14	Hardware Specification	6
1.15	Operating system and Compilation Environment	6
1.16	Threaded Computations	7
1.17	Time Limits	7
1.18	Ground Truth Integrity	7
2	Datasets	9
2.1	Image Types	9
3	SDK Application Programming Interface	10
3.1	1:N Identification with Large Enrollment Set	10
3.1.1	Threading and Multi-Processing	11
3.1.2	Implementation Identifiers	11
3.2	Input Fingerprint Image Structure	11
3.3	Output Fingerprint Template Structure	11
3.3.1	Enrollment Template Extraction and Finalization	12
3.3.1.1	Enrollment Template Extraction	12
3.3.1.2	Enrollment Finalization	12
3.3.2	Search Template Extraction	13
3.3.3	Identification Stage One	15
3.4	Output Candidate Lists Structure	15
3.4.1	Identification Stage Two	15
3.5	SDK C++ Interface	16
3.5.1	The SDK Interface	16
3.5.2	Exceptions	18
3.5.3	Biometric Evaluation Classes	18
3.5.3.1	IO::RecordStore	19
3.5.3.2	Memory::AutoArray	19

3.5.3.3	Error::Exception	19
4	Software and Documentation	20
4.1	Library and Platform Requirements	20
4.2	Configuration and Vendor-Defined Data	20
4.3	Linking	20
4.4	Installation and Usage	21
4.5	Modes of Operation	21
4.6	Runtime Behavior	21
4.6.1	Interactive Behavior	21
4.6.2	Status Messages	21
4.6.3	Error Codes and Exception Handling	21
4.6.4	External Communication	22
4.6.5	Stateful Behavior	22
5	How to Submit Implementations to FpVTE2012	23
5.1	Confidentiality and Integrity Protection	23
5.2	How to Participate	23
5.3	Implementation Validation	24
A	Namespace Index	26
A.1	Namespace List	26
B	Class Index	27
B.1	Class List	27
C	Namespace Documentation	28
C.1	FPVTE2012 Namespace Reference	28
C.1.1	Detailed Description	29
C.1.2	Typedef Documentation	29
C.1.2.1	FingerImageSet	29
C.1.2.2	FingerOutputSet	29
C.1.2.3	CandidateSet	29
C.1.3	Function Documentation	29
C.1.3.1	operator<<	29
C.1.3.2	operator<<	29
C.1.3.3	operator<<	29
D	Class Documentation	30
D.1	FPVTE2012::Candidate Struct Reference	30
D.1.1	Detailed Description	30
D.2	FPVTE2012::FingerImage Struct Reference	30
D.2.1	Detailed Description	31
D.3	FPVTE2012::FingerOutput Struct Reference	31
D.3.1	Detailed Description	31
D.4	FPVTE2012::ReturnStatus Struct Reference	32
D.4.1	Detailed Description	32
D.4.2	Constructor & Destructor Documentation	32
D.4.2.1	ReturnStatus	32
D.5	FPVTE2012::SDKInterface Class Reference	33
D.5.1	Member Function Documentation	33
D.5.1.1	getIDs	33
D.5.1.2	initEnrollmentTemplateExtraction	34
D.5.1.3	makeEnrollmentTemplate	34
D.5.1.4	finalizeEnrollment	35

D.5.1.5	initSearchTemplateExtraction	35
D.5.1.6	makeSearchTemplate	36
D.5.1.7	initIdentificationStageOne	36
D.5.1.8	identifyTemplateStageOne	37
D.5.1.9	initIdentificationStageTwo	37
D.5.1.10	identifyTemplateStageTwo	38
D.5.1.11	getSDK	38
D.6	FPVTE2012::StatusCode Class Reference	38
D.6.1	Member Enumeration Documentation	38
D.6.1.1	Kind	38

Chapter 1

Introduction

1.1 Background

NIST has conducted several fingerprint-related evaluations in the last decade. The first fingerprint evaluation was called Proprietary Fingerprint Templates 2003 (PFT2003) and is now changed to PFTII. PFTII is a one-to-one matching evaluation that looks at the core match capabilities of the matching software. It does not evaluate one-to-many capabilities.

Minutiae exchange (MINEX), also a one-to-one matching evaluation, began in 2004. MINEX was started to support testing of fingerprint matching technologies using INCITS 378 standard interoperable templates. About a year later Ongoing MINEX was established to support Personal Identity Verification (PIV).

The first one-to-many fingerprint evaluation conducted at NIST was FpVTE2003. FpVTE2003 had participants bring their own hardware and software to NIST for the evaluation and NIST supplied the data and retained all the matching results for final analysis.¹

1.2 Purpose

This document establishes the testing method for the one-to-many Fingerprint Vendor Technology Evaluation 2012 (FpVTE2012). In addition to describing the planned evaluation, this document includes the application program interface (API), software submission procedures, and participation application. See² for updates and additional documentation related to FpVTE2012.

FpVTE2003 only used enrollment sizes around 10,000 subjects. NIST has already conducted one-to-many biometric (face MBE2010³ and iris IREXIII⁴) evaluations using multi-million enrollment sizes in which all templates fit into the RAM of a single compute blade. FpVTE2012 will be the first biometric evaluation at NIST that partitions the enrollment set across multiple compute blades.

This technology evaluation is being done to meet several goals. FpVTE2012 will

- assess the current performance accuracy of one-to-many fingerprint matching software using operational fingerprint data,
- use enrolled sample sizes extending into the multiple millions,
- provide a testing framework and API for enrollment sizes that must be spread across the memory of multiple computer blades,
- support US Government and other sponsors in setting operational thresholds,
- evaluate on operational datasets containing newer datasets from live-scan ten-print “Identification Flats” capture systems, other live-scan capture devices (single finger and multi-finger), and historically significant scanned inked fingerprints. If available, datasets may include mobile device fingerprints.

¹<http://www.nist.gov/itl/iad/ig/fpvte03.cfm>

²<http://www.nist.gov/itl/iad/ig/fpvte2012.cfm>

³<http://www.nist.gov/itl/iad/ig/mbe.cfm>

⁴<http://www.nist.gov/itl/iad/ig/irex.cfm>

1.3 Audience

Commercial, non-profit and research organizations with an ability to implement a large scale one-to-many fingerprint identification algorithm are invited to participate in FpVTE2012. Organizations only interested in one-to-one verification should participate in the Proprietary Fingerprint Testing II (PFTII).⁵

Participants will need to implement the API defined in this document. Participation is world wide and there is no charge. NIST expects to evaluate prototypical or experimental technologies.

1.4 Application Scenarios

The plan is for the submitted software to perform segmentation of all plain impression images or some alternative matching without segmentation. Planned testing scenarios for FpVTE2012 include the following:

1. 1 plain finger against enrolled database of 1 plain finger. The plain images are from single finger captures.
2. 2 plain fingers (right/left index) against enrolled database of 2 plain images. The plain images are from single finger captures.
3. 4, 8, 10 print Identification Flats (4-4-2, right/left four finger plain and two thumbs plain) against enrolled database of 10 print Identification Flats.
4. 10 rolled fingers against an enrolled database of 10 print rolled images.
5. 10 plain fingers against an enrolled database of 10 print plain images. Plain impression images will be 4-4-1-1, right/left four finger plain and right/left single thumb plain impression.
6. 10 plain fingers against an enrolled database of 10 print rolled images. Plain impression images will be 4-4-1-1, right/left four finger plain and right/left single thumb plain impression.

These scenarios will be split into three classes of participation. Class A will be the single finger capture scenarios (1 and 2). Class B will be the Identification Flats scenarios (3). Class C will be the 10 print rolled and slap scenarios (4-6).

All participants must submit successfully to the Class A scenario to participate in the other classes. Participants will send a different SDK for each class of participation. The three possible levels of participation are:

- Class A only.
- Classes A and B.
- Classes A, B, and C.

The next two tables show the enrollment and search sets that will be used in each class of participation. The last column of the enrollment sets show the various sizes of each enrollment set that will be tested.

⁵<http://www.nist.gov/itl/iad/ig/pftii.cfm>

Enrollment Sets				
Set Name	Finger(s)	Data Type	Enrolled Sizes to be Tested	Subject
E1 (Class A)	1f Right Index	Plain Capture	5,000 10,000 100,000	
E2 (Class A)	1f Left Index	Plain Capture	5,000 10,000 100,000	
E3 (Class A)	2f Right and Left Index	Plain Capture	10,000 100,000 500,000 1,600,000	
E4 (Class B)	10f Identification Flats (4-4-2)	Plain Capture	500,000 1,600,000 3,000,000	
E5 (Class C)	10f	Rolled	500,000 1,600,000 3,000,000 5,000,000	
E6 (Class C)	10f (4-4-1-1)	Plain Capture	500,000 1,600,000 3,000,000 5,000,000	

Search Sets		
Set Name	Finger(s)	Data Type
S1 (Class A)	1f Right Index	Plain Capture
S2 (Class A)	1f Left Index	Plain Capture
S3 (Class A)	2f Right and Left Index	Plain Capture
S4 (Class B)	4f Right Slap ID Flat	Plain Capture
S5 (Class B)	4f Left Slap ID Flat	Plain Capture
S6 (Class B)	8f Right and Left Slap ID Flat	Plain Capture
S7 (Class B)	10f ID Flats (4-4-2)	Plain Capture
S8 (Class C)	10f	Rolled
S9 (Class C)	10f (4-4-1-1)	Plain Capture

The next table shows which combination of search and enrollment sets will be tested in each class of participation.

Testing for each Class of Participation	
Class	Search vs Enrollment Sets
A	S1 x E1 S2 x E2 S3 x E3
B	S4 x E4 S5 x E4 S6 x E4 S7 x E4
C	S8 x E5 S9 x E5 S9 x E6

1.5 Timeline

The following timeline is planned for FpVTE2012.

- March - Release draft API for public comments.
- **April 12 - Comments on Draft API due to NIST. Send to fpvte@nist.gov.**
- April 30 - Release Second Draft API.
- **May 11 - Comments on Second Draft API due to NIST. Send to fpvte@nist.gov.**
- May 18 - Release Final API.
- June - Release driver software and validation data.
- June 29 - Deadline to submit application to participate.
- July 9 - Begin accepting SDKs for testing in Phase I.
- November 16 - End of Phase I testing.
- January 18 - Deadline to submit final SDK for testing in Phase II.
- April-May 2013 - Final Publication of results.

1.6 Offline Testing

While this test is intended to mimic operational reality, it remains an offline test performed on fixed sets of operational images maintained at NIST. The intent is to assess the core capability of the algorithms. The offline testing does allow for uniform, fair, repeatable, and efficient evaluation of underlying technologies. Testing under a fixed API allows for a detailed set of performance related parameters to be measured.

1.7 Phased Testing

There are two Phases for submitting software to NIST for testing. To support research and development and to get robust and complete assessment of the algorithmic capabilities, in Phase I FpVTE will be conducted over several rounds. These test rounds are intended to support development of improved recognition performance. Once the test commences, NIST will accept implementations on a first-come-first-served basis and will return results to participants as expeditiously as possible. Participants may submit revised implementations to NIST only after NIST provides results for the prior submission. The frequency with which a participant may submit implementations to NIST will depend on the times needed for participant preparation, validation, execution, scoring, and participant review and decision processes.

There will be a maximum number of SDKs allowed for submission from each participant during phase I but that number will be based partially on the total number of participants. It will be communicated to actual participants after the final application deadline.

Once Phase I completes participants will have about 45 days to make changes and submit a final SDK (per class of participation) at the start of Phase II. Phase II will not be done in rounds and results will only be released in the Final FpVTE report.

Participants must submit software in Phase I in order to participate in Phase II.

1.7.1 Interim Reports

Each submission will result in a “score-card” provided to the participant. While the score-card may be used by the participant for arbitrary purposes, they are intended to promote development. The score-cards may include:

- machine generated (i.e. scripted),
- provided to participants with identification of their algorithm,
- include template size, timing, and performance accuracy results (ie. DET, ROC, etc.),
- include anonymous results from other participant implementations,
- are regenerated as new implementations become available and when new analysis is added.

NIST does not intend to release these test reports but may share such information with U.S. Government test sponsors without releasing the participant names.

1.7.2 Publication of results

Once NIST completes the testing rounds, one or more final reports will be released.

- A NIST Interagency Report (NISTIR) will be published.
- NIST may publish/present results in other academic literature, conferences, or workshops.

The final report will publish results for all submissions, with the intent being to show progress and performance trade-offs made by the implementations. Ultimately, the reported results will highlight the most capable implementations.

IMPORTANT: Results will be attributed to the providers in the final reporting.

1.8 Reporting of Failure to Enroll or Acquire (FTE, FTA)

FTE and FTA have different meanings in production systems where humans interact with biometric readers. For offline testing, soft failures, where the algorithm elects not to produce a template (e.g. image quality reasons) shall be treated identical to failures, where the software crashes or hangs. For this test, any failure to convert images into templates shall be counted as a FTE and reported as such. Further instructions on handling FTE cases are provided in the next section.

1.9 Matching of Empty, Broken, and Missing Templates

For a FTE, the template generator must return an empty (0 byte) template.

After software failure, the absence of an output template will cause NIST to produce an empty (0 byte) template.

For enrollment templates the finalization step must handle these empty templates.

NIST will not call the one-to-many search function if the preceding search template is empty (i.e. FTE). The search template will be stored with a candidate list of all -1 match scores.

1.10 Reporting of Template Size

Because template size is influential to storage requirements, computational efficiency, and wireless/mobile applications, this API supports measurement of template size. NIST will report statistics on the actual size of the templates produced by implementations submitted to this test.

1.11 Runtime Memory Usage

NIST will attempt to allocate enough blades such that the enrollment data can be distributed across them without enrollment data storage exceeding 75% of the blade's memory. The other 25% will be reserved for OS and implementation usage. The blades being used for the evaluation have 192GB of memory. Based on these specifications there will be 144GB available for enrollment data and 48GB for OS and implementation usage. NIST may report the amount of memory used during one-to-many searches.

1.12 Reporting of Computational Efficiency

As with other tests, NIST will compute and report performance accuracy. Additionally, NIST will report timing statistics for core functions of the submitted implementation. This includes feature extraction and identification functions.

1.13 Exploring the Accuracy-Speed Trade-Off

Each participant will be allowed/encouraged to submit two implementations for evaluation. The intent of this decision is to demonstrate the trade off between accuracy and speed, but participants are not required to submit "fast" and "slow" variants. Participants may, for example, choose to submit a mature and an experimental implementation.

NIST will be reporting the performance of single and two finger (Class A) separately for slow and fast submissions. The intent is to report fast SDKs seen as more viable for positive access control application and highlight not just the performance of the algorithm but also the speed. "Fast" SDKs will be those that can do a single search vs. the 100K enrollment set in under 20 seconds and "slow" will be anything over that search time.

1.14 Hardware Specification

NIST intends to support high performance by specifying the runtime hardware beforehand. There are several types of computer blades that may be used in the testing. The blades are labeled as Dell M905, M910, M605, and M610. The M610, M905 and M910 have 192GB of total RAM available per blade. The M605 blades have 64GB of total memory available but will only be used for template generation. The following list gives more details about the hardware of each blade type:

- Dell M605 - Dual Intel Xeon E5405 2 GHz CPUs (4 cores each)
- Dell M610 - Dual Intel Xeon X5680 3.3 GHz CPUs (6 cores each)
- Dell M905 - Quad AMD Opteron 8376HE 2 GHz CPUs (4 cores each)
- Dell M910 - Dual Intel Xeon X7560 2.3 GHz CPUs (8 cores each)

NIST is requiring the use of 64-bit architecture. This will support large memory allocation to support 1:N identification with image counts in the multi-millions. Note that while the API allows read access of the disk during execution, disk access may be prohibitively slow.

Some of the API calls allow the implementation to write persistent data to hard disk. Note that the file system used doesn't efficiently support creation of millions of small files. Participants are strongly encouraged to use some database structure to store the finalized enrollment templates.

1.15 Operating system and Compilation Environment

All submitted implementations will be tested on 64-bit CentOS 6.2 (2.6.32-220.7.1.el6.x86_64). NIST will link the provided libraries to our C++ language test driver. Participants are required to provide their library in a format that is linkable using GNU g++ 4.4.6-3. The standard libraries are:

- /usr/lib64/libstdc++.so.6.0.13 (GLIBCXX 3.4.13)
- /lib64/libc.so.6 -> libc-2.12.so (GLIBC 2.12)
- /lib64/libm.so.6 -> libm-2.12.so

and a typical link command would be:

```
g++ -I. -Wall -m64 -o fpvte12test fpvte12test.cpp -L. -lfpvte12_Participant_A
```

1.16 Threaded Computations

Threaded computations will be allowed for finalizing the enrollment set only. All other functions are not to perform multi-threaded computations for this test. For these other functions, the NIST driver will be running multiple independent instances.

1.17 Time Limits

The reported template extraction timing statistics will be based on a subset on the data run on a dedicated compute blade. These time limits are per image. If all ten fingers of a subject are being extracted, the time limit is increased by a factor of 10.

- Feature extraction - should be accomplished in 3 seconds or less for each input fingerprint. A four finger slap counts as four input fingerprints.
- Finalization - should be accomplished in 12 hours or less on a single compute blade using multiple cores. The finalization blade will have 2 CPU with 6 core each.
- Identification/Search - See the table below for information on search timings. Search times will be averaged over the search set and this average should not exceed the times listed in the table below. Note that for Class A (1f and 2f) that results will be reported separately for "fast" algorithms (< 20s) and "slow" algorithms (> 20s). A single search time is the total combined time measured for stage one and stage two identification (not including initialization times). This will include the I/O time in stage one identification needed to output the data needed for stage two identification. The "Stage 1 Data Directory" will be RAM Disk storage that will be moved to hard drive storage by the test driver. This data will be moved back to RAM disk storage (by the test driver) for use in stage two identification.

Search Timing by Class		
Class	Search vs Enrollment Set	Time per Search
A	S1 x E1	<20s (fast)
	S2 x E2	<500s (slow)
	S3 x E3	
B	S4 x E4	<90s
	S5 x E4	
	S6 x E4	
	S7 x E4	
C	S8 x E5	<90s
	S9 x E5	
	S9 x E6	

1.18 Ground Truth Integrity

The test datasets are derived from operational systems. They may contain ground truth errors in which:

- a single subject is present under multiple different identifiers,
- two subjects are present under one identifier, or
- finger positions are mislabeled.

If these errors are detected, they will be removed or repaired. NIST will use aberrant scores (high impostor scores/low genuine scores) to detect such errors. This process will be imperfect, and residual errors are likely to remain. For comparative testing, identical datasets will be used and the presence of errors should give an additive increment to all error rates. For very accurate implementations this could dominate the error rate. NIST intends to attach appropriate caveats to the accuracy results. For prediction of operational performance, the presence of errors gives incorrect estimates of performance.

Chapter 2

Datasets

This section describes the datasets that will be used for the evaluation.

2.1 Image Types

The evaluation dataset used in FpVTE2012 will be from operational datasets made available to NIST for fingerprint evaluations. The datasets are government use only and will not be released to the public. The datasets will, to the extent permitted by law, be protected under the Freedom of Information Act (5 U.S.C. 552) and the Privacy Act (5 U.S.C. 552a) as applicable.

The datasets will be comprised of several fingerprint impression types, including rolled, multi-finger plains, and single finger plains. Rolled are all individual captures that attempt to capture the full width of the fingerprint by rolling from side to side during capture. Multi-finger plains capture the four left/right fingers all at the same time and for Identification Flats (IDFlats) the two thumbs are also captured at the same time. Single finger plains are individual captures of the left and right index fingers on a single finger capture device. If available, the single finger captures may include fingerprints captured on mobile devices. FpVTE2012 will look at performance of plain-to-rolled, plain-to-plain, and if time and resources permit rolled-to-rolled.

Many of the datasets are larger samples of data used in previous NIST evaluations such as PFT, MINEX, NFIQ, and FpVTE2003. The single finger capture fingerprint images will be data from DHS. The ten print rolled and slap (4-4-1-1) fingerprint images will be data from FBI, DHS, LACNTY, AZDPS, and TXDPS. The Identification Flat (4-4-2) fingerprint images will be from DHS.

All images in the datasets are 8-bit grayscale. Images have been compressed using Wavelet Scalar Quantization (WSQ) compression, but they will be passed to the submitted implementation as uncompressed raw pixel images. All images were scanned at 500 pixels per inch and will have varying dimensions that will be passed in a data structure to the implementation.

Multiple finger plain captures will not be segmented into individual fingerprints. The implementation is required to perform any needed segmentation of the fingerprints.

Chapter 3

SDK Application Programming Interface

This section defines the interface for software submitted to the Fingerprint Vendor Technology Evaluation 2012. FpVTE2012 is intended to be a large scale one-to-many identification evaluation of proprietary fingerprint templates.

FpVTE2012 will only use CentOS 6.2 (2.6.32-220.7.1.el6.x86_64), no other operating systems are allowed. All software must run under CentOS 6.2 (2.6.32-220.7.1.el6.x86_64).

The intent of this API is to support:

- distribution of the enrolled templates across the memory of multiple blades,
- distributed enrollment and identification with multiple instance of each process running independently and in parallel,
- recovery after a fatal exception and record the number of failures,
- the “black-box” nature of biometric templates and matching,
- the freedom of the provider to use arbitrary algorithms,
- measure duration of core function calls,
- measure template sizes,
- measure matching performance.

The following sections give general descriptions of the processes that make up the API and their role in the evaluation. Details of the subroutine interface are given in section [3.5](#) and Appendix D.

3.1 1:N Identification with Large Enrollment Set

The 1:N identification has two main phases, enrollment and identification. Enrollment has two steps. First all the templates used in the enrolled set are extracted from the fingerprint images. Second, a process is run that finalizes the enrollment templates used during identification. Identification is completed in three steps. First, the templates are extracted for the search image(s). Second, the extracted search templates are passed to stage one of identification, which searches the entire set of enrolled templates, across several blades, for potential matches. Finally, stage two identification is invoked and uses the results from stage one identification to produce the final candidate list of the top 100 potential matches to the search subject.

The expectation is that the total memory needed to store the entire set of enrolled templates in RAM will exceed the memory capacity of a single blade available for the evaluation. For this reason, stage one identification is accomplished by dividing the enrolled templates into pieces, where each piece can be loaded into RAM on separate blades. Stage one identification searches each piece of the divided enrollment set separately and stores the needed information for that search, so stage two of identification can produce a candidate list of the top 100 potential matches to the search subject.

While the expectation is dividing the enrollment set into pieces across blades, it is conceivable for a given test within the evaluation that the enrolled templates could fit into the memory of a single blade. Therefore, implementations should be able to handle any number of blades being used for stage one identification ($1 \leq B \leq B_{total}$). Additionally, it is expected that if a test were run with $B = 1$ and the same test were run with $B = 2$ (or more) the resulting candidate list would be the same.

Each function in the API enrollment process, search template extraction, stage one identification, and stage two identification call initialization routines that allow the implementation to pre-configure itself as needed. No additional initialization functions are allowed and all configuration information will be located in the configuration directory which has read only access.

3.1.1 Threading and Multi-Processing

Enrollment finalization is the only function allowed to use multi-threading. It is a single process that must run to completion before proceeding to the identification stages.

For all other functions (template extraction and identification) the NIST driver will handle invoking multiple processes to fully utilize the available resources. Implementations submitted should anticipate that each stage, enrollment/search template extraction and stage one/two identification will have multiple instances invoked by the NIST driver. These instances could be across multiple CPUs/cores on a single blade or across multiple blades. It is important that the implementation account for this during process initialization so that each instance runs completely independent of the others.

This multiple instance implementation was used in a previous 1-to-many evaluation (IREXIII) and multiple searches were performed against an enrollment set in the memory of a single blade as long as the memory was not changed during the search. FpVTE 2012 will use this same plan to load the enrollment templates into memory. Then using the multiple cores available on the blades, the test driver can invoke multiple searches against that enrolled set at the same time. Again, the key is that the enrolled set loaded into the blade memory must remain unchanged/static during searching.

3.1.2 Implementation Identifiers

Each implementation must return a NIST assigned ID and a contact email address.

3.2 Input Fingerprint Image Structure

Structure details are in Appendix D (D.2).

FpVTE2012 will enroll multiple fingerprints from a subject in a single function call. The input data structure `FingerImage` will be used for passing images for a single subject into the template extraction process. The details related to this structure are described in the reference documentation `FingerImage` and `FingerImageSet`. `FingerImage` defines the structure for a single fingerprint image and `FingerImageSet` is a vector of `FingerImage` for each finger of that subject. If the test is using 10 rolled fingerprints for each subject the `FingerImageSet` for each subject will contain `FingerImages`. If the test is 10 plain fingerprint images per subject the input `FingerImageSet` will have `FingerImage(s)` for the left/right four finger plains and left/right thumb plains. Any segmentation into individual fingerprints is left to the implementation.

The number of images per subject will vary depending on the specific test being performed, but will typically be either 1, 2, 4, or 10 fingerprint images. The implementation will need to support this accordingly in enrollment and matching.

3.3 Output Fingerprint Template Structure

Structure details are in Appendix D (D.3).

The template extraction process will return both the resulting fingerprint templates and a data structure `FingerOutput` containing information about the templates (i.e. actual template size) and the input fingerprints for a given subject. The format of the returned templates are uncontrolled by FpVTE2012. Details related to the structure can be found in the reference documentation `FingerOutput` and `FingerOutput`.

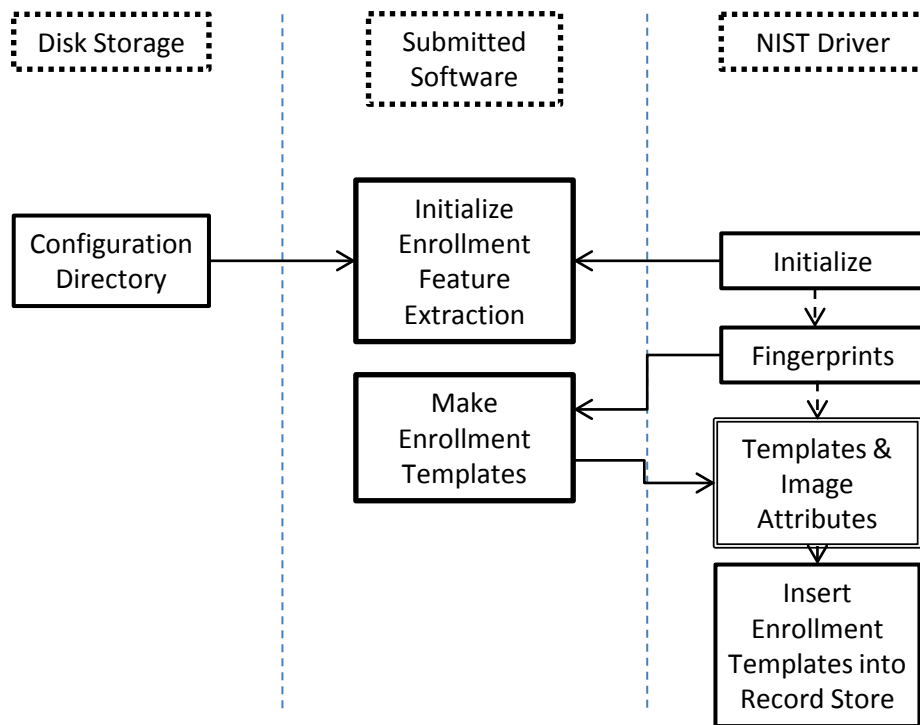


Figure 3.1: Flowchart for enrollment feature template extraction process

3.3.1 Enrollment Template Extraction and Finalization

The enrollment template extraction process is accomplished in two steps. First, templates for each subject in the enrolled set are extracted independently of each other. This allows for multiple processes to run simultaneously across many cores/blades. After all templates are extracted, the second step is the enrollment finalization described in more detail in section 3.3.1.2.

3.3.1.1 Enrollment Template Extraction

Function call parameters and details are in Appendix D (D.5.1.2 and D.5.1.3).

The enrollment template extraction process is shown in figures 3.1 and 3.2. For each instance of the enrollment template extraction process, the NIST driver will call the enrollment initialization function once before multiple calls to enrollment template extraction. The resulting templates are then stored in a template RecordStore. The RecordStore is described in section 3.5.3.1. The enrollment template extraction process will be accomplished by running multiple template extraction processes in parallel across multiple cores and blades. NIST will merge the multiple template RecordStores created into a single enrollment template RecordStore that gets passed to the enrollment finalization process.

3.3.1.2 Enrollment Finalization

Function call parameters and details are in Appendix D (D.5.1.4).

After extracting all enrollment templates, the enrollment finalization process shown in figures 3.3 and 3.4 is called. The input to this process is the merged single enrollment RecordStore and the output is a directory that the application will populate as needed. The implementation must divide the finalized enrollment set into B partitions, one for each of the blades in the search process. The NIST test driver will tell the finalization process how many blades (B) can be used for identification. After finalization, the enrollment set is “frozen” and this directory will be made read only during template searching.

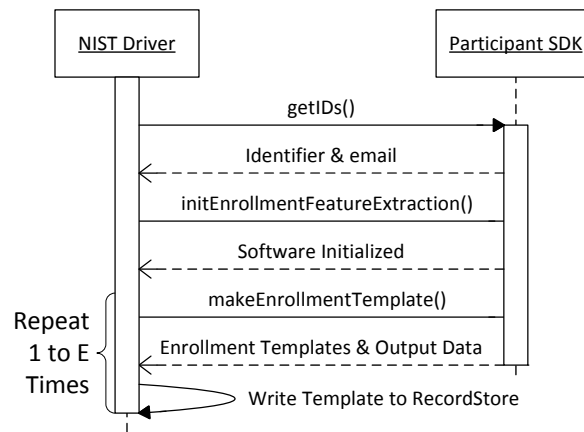


Figure 3.2: Calling sequence for enrollment feature template extraction process

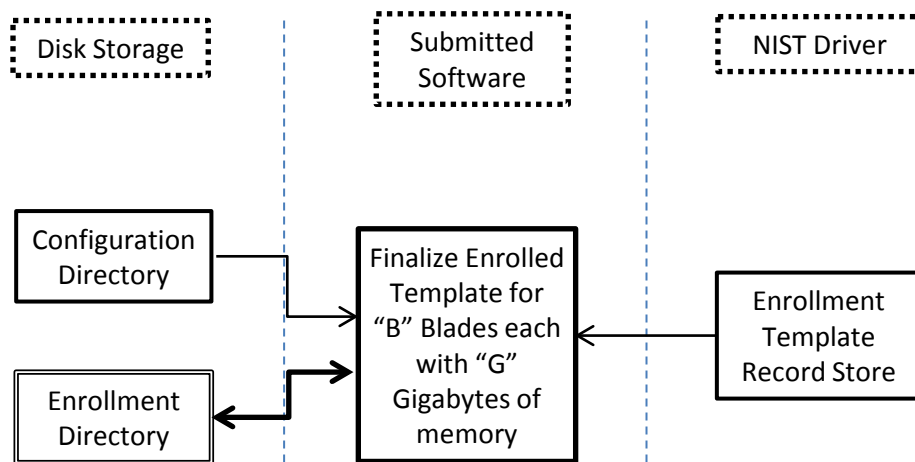


Figure 3.3: Flowchart of enrollment template finalization process

Finalization allows the implementation to conduct, for example, statistical processing of the feature data, indexing, and data reorganization. The function may alter the file structure. It may increase or decrease the size of the stored data. No output to the test driver is expected from this function except a successful `StatusCode`.

The format of the enrollment directory is completely controlled by the participant. A major note here is that the file system used in the NIST test environment is not optimal for large numbers of small files. If an implementation is creating a large number of individual files, it will impact performance and most likely be excluded from the evaluation. Implementations must not create individual files for each subject in the enrollment set.

3.3.2 Search Template Extraction

Function call parameters and details are in Appendix D (D.5.1.5 and D.5.1.6).

This section of the API describes the search template extraction process as shown in figures 3.5 and 3.6. The enrollment templates will not be used as search templates. This allows for a different function to be used for search template creation. Like enrollment template creation, the NIST test driver will call initialization once for each instance of search template creation before multiple calls to search template creation. The resulting templates will be stored for later testing or passed directly to stage one identification.

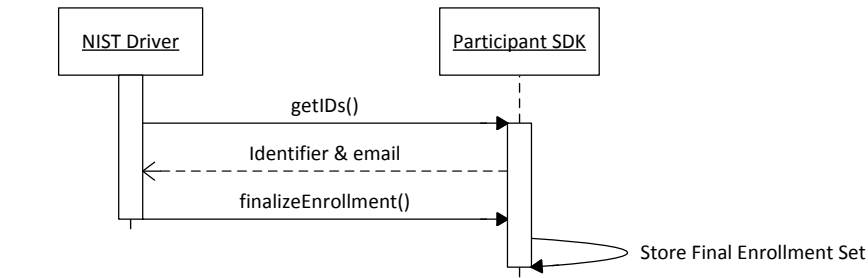


Figure 3.4: Calling sequence for enrollment template finalization process

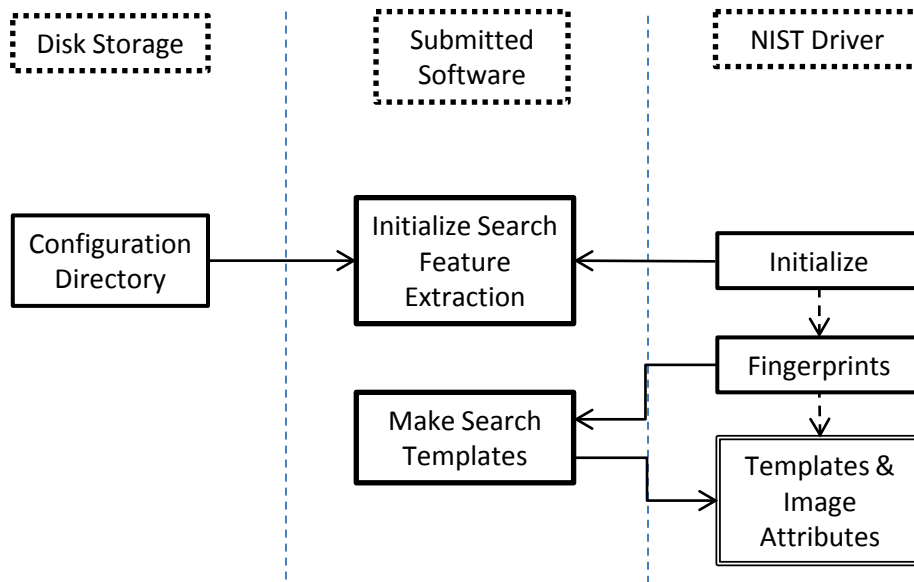


Figure 3.5: Flowchart of search feature template extraction process

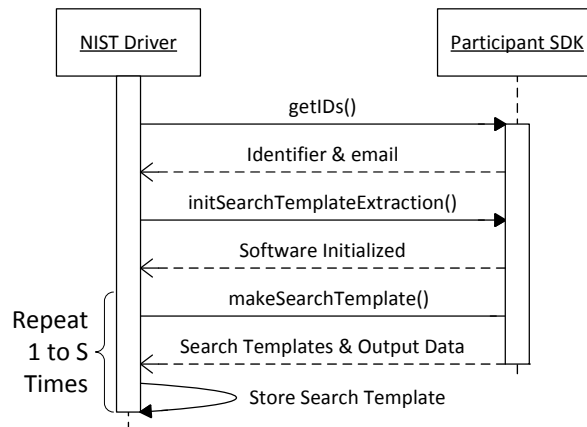


Figure 3.6: Calling sequence for search feature template extraction process

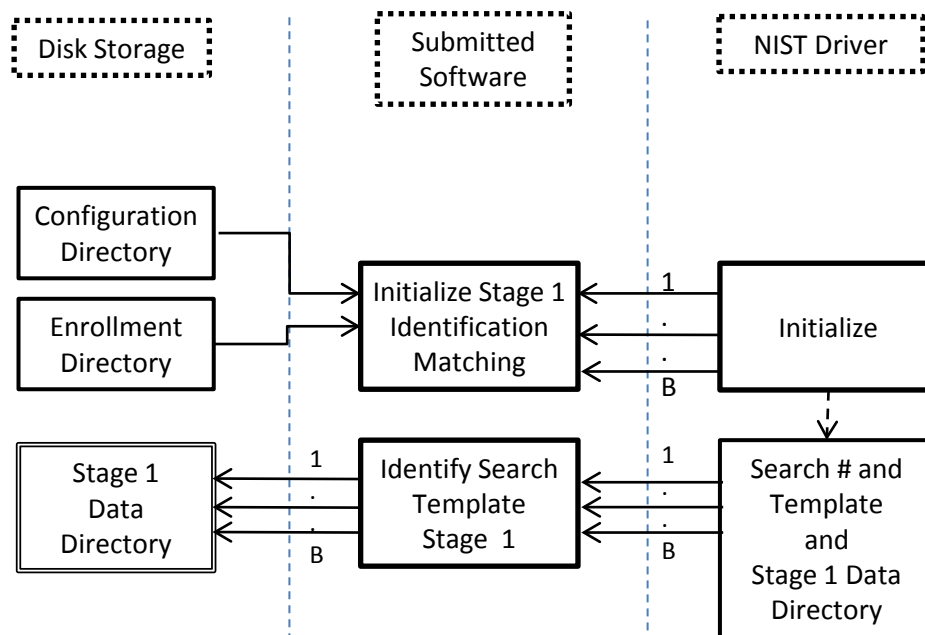


Figure 3.7: Flowchart of first stage of identification process

3.3.3 Identification Stage One

Function call parameters and details are in Appendix D (D.5.1.7 and D.5.1.8).

This section describes the first stage of identification as shown in figures 3.7 and 3.8. For this stage of identification, the enrollment set will be stored in pieces across multiple blades. The number of blades (B) will be the same as was input for enrollment finalization. Each separate piece of the enrollment set is loaded into memory by the implementation during the initialization step. The NIST driver will run multiple search subjects against this piece of the enrollment set simultaneously on that blade.

There will be a 4 GB storage area in which results from this first stage of matching (Stage 1 Data Directory) can be stored for each search subject. This storage area will be a RAM disk and is shared by all identification processes running on that blade. In an effort to reduce disk I/O from match timing functions, the moving of stage one identification results data from the dedicated storage area to a shared SAN storage device is done by the NIST driver after the call to stage one identification is completed for each search subject.

Once results are moved to the SAN storage, they are removed from the dedicated storage freeing up space for other stage one results. It is important to note that the output directory for stage one identification results is shared by all B blades running stage one identification processes. This directory is where the output results from all stage one identification processes are being grouped back together for processing in stage two identification. The multiple identification processes in stage one across the blades are asynchronous, but stage two identification can not be run until all blades have finished stage one for a specific search subject.

3.4 Output Candidate Lists Structure

Structure details are in Appendix D (D.1).

The second identification stage will produce a candidate list for results analysis. The list will be returned in a data structure defined in the reference documentation `Candidate` and `CandidateSet`.

3.4.1 Identification Stage Two

Function call parameters and details are in Appendix D (D.5.1.9 and D.5.1.10).

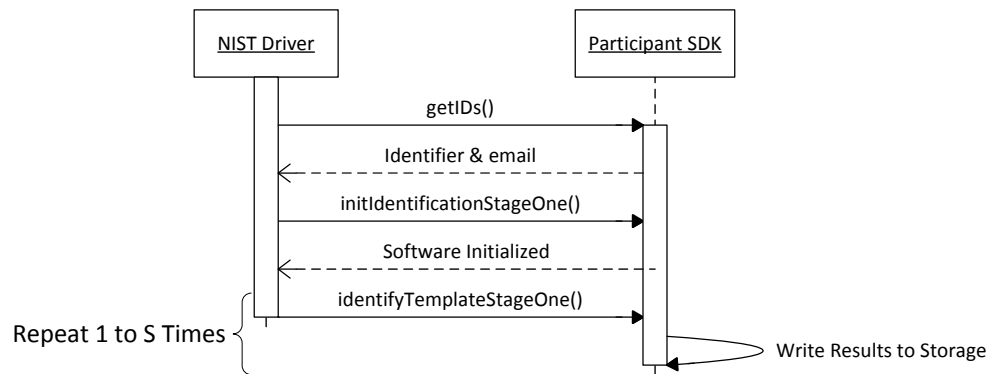


Figure 3.8: Calling sequence for first stage of identification process

This section describes the second stage of identification as shown in figures 3.9 and 3.10. After initializing this stage of identification, multiple search subjects will be passed to the identification process, one at a time. The search subjects will be the same ones from stage one identification. The second stage of identification will have access to both the original enrollment directory and the data directory containing the output of stage one identification. The stage one output will be reloaded into a RAM disk for use in stage two identification. Stage two identification will output the candidate list and required scoring data for the search subject.

There is no intended control on how stage two reaches the final candidate list but the search time limit that combines stage one and stage two search times must be followed. Stage two could be as simple as sorting/organizing stage one results to get the candidate list or it could involve a more complex algorithm that involves some level of additional matching of feature templates.

3.5 SDK C++ Interface

FpVTE has defined an abstract C++ [1] class that must be implemented by the software under test. This class, `SDKInterface`, contains the methods that will be called by the NIST SDK driver software. SDK vendors must deliver a library that implements the abstract interface defined by that class. C++ was chosen in order to make use of some object-oriented features and for interoperability with existing C code.

3.5.1 The SDK Interface

The abstract class `SDKInterface` must be implemented by the SDK vendor. The processing that takes place during each phase of the test is done via calls to the methods declared in the interface as pure virtual, and therefore are to be implemented by the SDK. The test driver will call these methods, handling all return values and exceptions. Example code will be distributed by NIST to show how an SDK can implement the methods.

An example of an implementation's header file might be:

Listing 3.1: SDKInterface Subclass Declaration

```

1 #include <fpvte2012.h>
2
3 namespace FpVTE2012 {
4 class NullSDK : public FpVTE2012::SDKInterface {
5 public:
6
7     NullSDK();
8     ~NullSDK();
9
10    void getIDs(

```

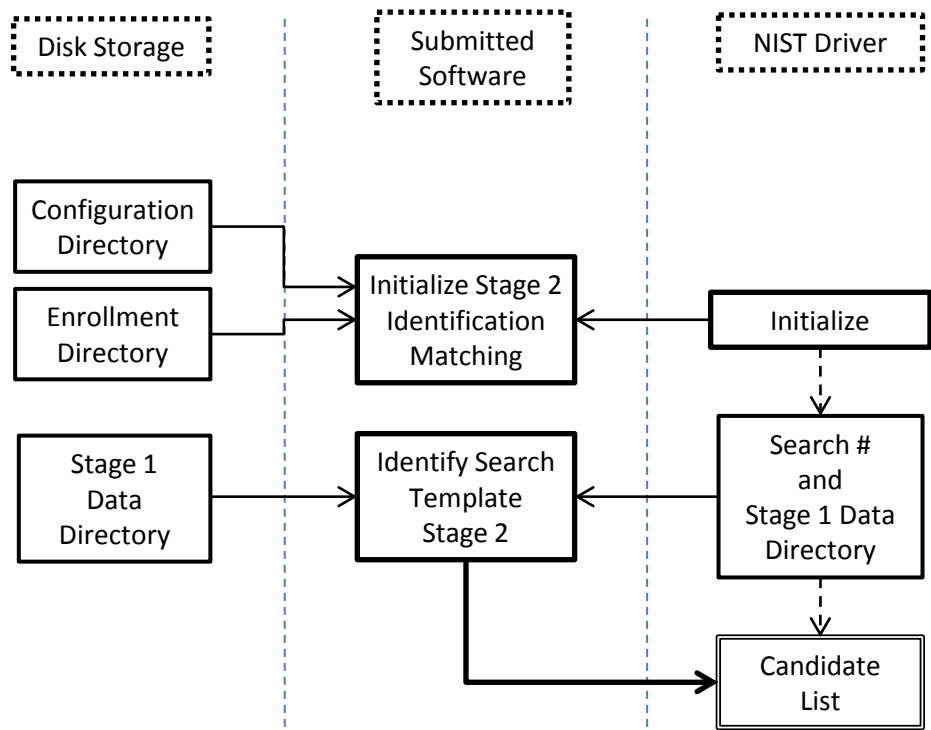


Figure 3.9: Flowchart of second stage of identification process

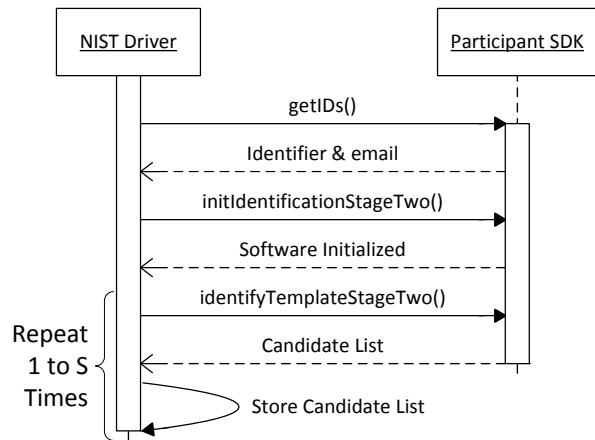


Figure 3.10: Calling sequence for second stage of identification process

```

11         string &nist_assigned_identifier,
12         string &email_address);
13 }

```

Listing 3.1 shows how to subclass the abstract interface class and declare the implementation of the `getIDs()` method. The definition of the method is then:

Listing 3.2: SDKInterface Subclass Definition

```

1 #include <fpvteNullSDK.h>
2
3 using namespace BiometricEvaluation;
4 using namespace FPVTE2012;
5
6 NullSDK::NullSDK () { }
7
8 NullSDK::~NullSDK() { }
9
10 void
11 NullSDK::getIDs(
12     string &nist_assigned_identifier,
13     string &email_address)
14 {
15     nist_assigned_identifier = "0x12345678";
16     email_address = "foo@example.com";
17 }
18
19 SDKIptr
20 SDKInterface::getSDK()
21 {
22     NullSDK *p = new NullSDK();
23     SDKIptr ap(p);
24     return (ap);
25 }

```

The other methods of the `SDKInterface` class are implemented in a similar manner.

There is one class (static) method declared in `SDKInterface`, `getSDK()` which must also be implemented by the SDK. This method returns a shared pointer to the object of the interface type, an instantiation of the SDK implementation class. A typical implementation of this method is also shown in Listing 3.2.

3.5.2 Exceptions

Many of the SDK API methods are declared to throw an exception in the case of error. SDKs should only throw an exception when the method call cannot be completed. For example, in the matching call, the SDK should *not* throw an exception if there is a failure to match, or the image quality is too low. An example of the appropriate use of the exception is when a memory allocation failure, or an input template is corrupted. The exception string should then be filled out with as much detail as desired to enable debugging.

3.5.3 Biometric Evaluation Classes

The API makes use of several classes that are part of the NIST Image Group Evaluation framework. The pertinent components of the framework will be provided to SDK vendors as source code, including a build system for the Linux operating system. Descriptions of the framework classes are provided in this section.

3.5.3.1 IO::RecordStore

A `RecordStore` is an abstraction that associates keys with an opaque object. These key-value pairs are unique, based on the key which is a string. Applications, in addition to retrieving the data associated with a key, can insert, remove, or replace the data. Functionality is also provided to sequence through a `RecordStore`; however, there is no guarantee that the key-value pairs will be retrieved in the order they were inserted.

The API defined for FpVTE provides an opened `RecordStore` to the SDK as read-only in some cases. The SDK must not attempt to insert or remove a key for those `RecordStores` else an exception will be thrown.

For FpVTE2012 the `RecordStore` is being used to store the large set of enrollment templates in a single file that can then be passed to the finalization process.

3.5.3.2 Memory::AutoArray

The `AutoArray` is used to manage an array of objects in a safe manner with the efficiency associated with standard C++ arrays. The size of the array can be changed dynamically, usually done when a larger array is required.

Many of the SDK interface functions pass a buffer containing an image or a biometric template. This buffer is defined as a `uint8Array`, which is an `AutoArray` of unsigned 8-bit integers.

3.5.3.3 Error::Exception

All exceptions thrown by the SDK are of the `Exception` class. An object of this class can be constructed with a string giving more details on the nature of the exception. The functions implemented by the SDK should set the exception string to contain information that will be useful for debugging.

Some of the methods of the framework objects throw exceptions which must be handled by the SDK. All of these exception objects are subclasses of the `Exception` class. Therefore, the SDK can simply catch `Exception`, and then may simply rethrow it, or throw a new `Exception` object with more detailed information in the information string of the `Exception` object. In all cases the SDK methods must throw an `Exception` object.

Chapter 4

Software and Documentation

This section describes the specific software and documentation requirements for implementations submitted by participants.

4.1 Library and Platform Requirements

Participants shall provide NIST with binary code only (no source code). Header files shouldn't be necessary, but they are allowed. If used, they shall not contain intellectual property of the participant nor material that is otherwise proprietary. It is preferred the implementation be submitted in the form of a single static library. However, dynamic and shared library files are permitted.

The core library shall be named as follows:

`libFpVTE12_NIST_Assigned_ID_[A, B, or C]_[1 or 2]_sequence.[so or a]`

NIST_Assigned_ID The implementation identifier assigned by the NIST test liaison.

A, B, or C Class of participation for this submission.

1 or 2 “Fast” (1) or “slow” (2) submission for this implementation.

sequence Two digit sequence number, incremented by 1 when a new implementation is sent to NIST (i.e. 01, 02, ...).

If necessary, additional dynamic or shared library files may be submitted that support this “core” library file. The core library file may have dependencies implemented in these other files.

The use of any graphic processing units (GPU) is not permitted.

4.2 Configuration and Vendor-Defined Data

The implementation under test may be supplied with configuration and supporting data file in the configuration directory.

NIST will report the size of the supplied configuration files.

4.3 Linking

NIST will link the provided library file(s) to a C++ language test driver application developed at NIST. The runtime environment will be CentOS 6.2 (2.6.32-220.7.1.el6.x86_64), with GNU g++ 4.4.6-3 (**PREFERRED**).

The NIST test driver is compiled using GNU g++ 4.4.6-3 and participants are required to provide their library in a format that is linkable to the NIST test driver using GNU g++ 4.4.6-3. Thus, participants are strongly advised to verify library-level compatibility with GNU g++ 4.4.6-3 (on an equivalent platform) prior to submitting their software to NIST. This will help avoid linkage problems once the software is sent to NIST.

FpVTE2012 will only use CentOS 6.2 (2.6.32-220.7.1.el6.x86_64), no other operating system is allowed. All software must run under CentOS 6.2 (2.6.32-220.7.1.el6.x86_64). A copy of the ISO used to build the NIST systems is available at http://nigos.nist.gov:8080/evaluation/6.2x86_64binDVD1.iso

Dependencies on external dynamic/shared libraries such as compile-specific development environment libraries are discouraged. If absolutely necessary, external libraries must be provided to NIST upon prior approval of the Test Liaison.

4.4 Installation and Usage

The implementation must install easily (no participant interaction required) to be tested, and shall be executable on any number of machines without additional machine-specific license control procedures or activation. The implementation shall be installable using simple file copy methods and shall not require the use of a separate installation program.

The implementation shall neither implement nor enforce any usage controls or limits based on licenses, number of executions, presence of temporary files, etc. The implementation shall remain operable until December 31, 2013.

Hardware activation dongles are not acceptable.

4.5 Modes of Operation

Individual implementations provided shall not include multiple “modes” of operation, or algorithm variations. No switches or options are allowed within a library. For example, the use of two different “coders” by a feature extractor must be split across two separate implementation library submissions.

4.6 Runtime Behavior

4.6.1 Interactive Behavior

The implementation will be run in a non-interactive batch mode, without terminal support. Therefore, the submitted library shall not use any interactive functions such as graphical user interface (GUI) calls or any other calls which require any type of terminal interaction.

4.6.2 Status Messages

Since the implementation will be run in a non-interactive batch mode, the submitted library must run quietly meaning no messages should be written to standard output or error. An implementation may write debugging messages to a log file, which must be declared in the documentation.

4.6.3 Error Codes and Exception Handling

The implementation should report errors back to the caller by setting the appropriate status code, and optionally providing an information string. Section 3.5 describes the handling of exceptions encountered by the SDK. In the case of an exception being thrown by the SDK, the returned status object will not be available to the caller. Therefore, use of the information string inside the exception object is encouraged.

4.6.4 External Communication

Processes running on NIST hosts shall not create side effects in the runtime environment in any manner, except for memory allocation and release. Implementations shall not write any data to an external resource (e.g. server, network, or other process).

Implementations shall not attempt to read any resource other than those explicitly allowed in this document. If detected, NIST reserves the right to cease evaluation of all implementations from the participant, notify the participant, and document the activity in the published reports.

4.6.5 Stateful Behavior

All components in this test shall be stateless and deterministic, except as noted. This applies to image segmentation, template creation and matching. Thus, all functions should give identical output, for a given input, independent of the runtime history. This holds for enrollment set partitioning. For example, results should be the same if the enrollment set is spread across four blades or eight blades. NIST will institute appropriate tests to detect stateful behavior. If detected, NIST reserves the right to cease evaluation of all implementations from the participant, notify the participant, and document the activity in the final reports.

Chapter 5

How to Submit Implementations to FpVTE2012

5.1 Confidentiality and Integrity Protection

NIST requires that all software, data, and configuration files submitted by the participants be signed and encrypted. Signing is done with the participants private key, and encryption is done with the NIST public key. The detailed commands for signing and encrypting are given here:

NIST will validate all submitted materials using the participant's public key, and the authenticity of that key will be verified using the key fingerprint. This fingerprint must be submitted to NIST by writing it on the signed participation agreement.

By encrypting the submissions, we ensure privacy; by signing the submission, we ensure authenticity (the software actually came from the submitter.) **NIST will not accept any submission that is not signed and encrypted. NIST accepts no responsibility for anything that is transmitted to NIST that is not signed and encrypted with the NIST public key.**

5.2 How to Participate

Those wishing to participate in FpVTE2012 must meet all the deadlines of the FpVTE 2012 calendar.

Software must be submitted as follows:

- IMPORTANT: Follow the instructions for encrypting submissions in section ??.
- Complete the "Application to Participate in FpVTE2012".
- Provide an implementation library (encrypted) that complies with the API specified in this document.
 - Encrypted data and implementations below 20MB can be emailed to NIST at fpvte@nist.gov
 - Encrypted data and implementations over 20MB can be
 - * Made available for download from generic websites where NIST is not required to register or establish any membership, or
 - * FEDEX/UPS or similar shipping method (so package can be tracked) to NIST on CD/DVD at this address (tracking number must be emailed to NIST):

NIST
c/o FpVTE2012 Test Liaison
100 Bureau Drive MS 8940
Gaithersburg, MD 20899-8940
USA

5.3 Implementation Validation

Participants will be provided validation datasets containing imagery from publicly available datasets in the same format as the evaluation test datasets. These validation datasets will be used to test implementation functionality before submitting to NIST. The output from these validation datasets must be submitted with the implementation. NIST will repeat the processing of the validation datasets on our hardware to confirm the implementation is functioning correctly.

Bibliography

[1] Bjarne Stroustrup. *The C++ Programming Language*. Addison Wesley, special edition, 2000. [16](#)

Appendix A

Namespace Index

A.1 Namespace List

Here is a list of all documented namespaces with brief descriptions:

FPVTE2012	Contains all the structures and functions used by the API	28
---------------------------	---	--------------------

Appendix B

Class Index

B.1 Class List

Here are the classes, structs, unions and interfaces with brief descriptions:

FPVTE2012::Candidate	
Object defining format of candidate reporting	30
FPVTE2012::FingerImage	
Object containing the fingerprint image and corresponding attributes	30
FPVTE2012::FingerOutput	
Object for output data related to an extracted template	31
FPVTE2012::ReturnStatus	
A structure to contain information about a failure by the software under test	32
FPVTE2012::SDKInterface	33
FPVTE2012::StatusCode	38

Appendix C

Namespace Documentation

C.1 FPVTE2012 Namespace Reference

Contains all the structures and functions used by the API.

Classes

- struct [FingerImage](#)
Object containing the fingerprint image and corresponding attributes.
- struct [FingerOutput](#)
Object for output data related to an extracted template.
- struct [Candidate](#)
Object defining format of candidate reporting.
- class [StatusCode](#)
- struct [ReturnStatus](#)
A structure to contain information about a failure by the software under test.
- class [SDKInterface](#)

Typedefs

- typedef struct [FingerImage](#) **FingerImage**
- typedef std::vector< [FingerImage](#) > [FingerImageSet](#)
- typedef struct [FingerOutput](#) **FingerOutput**
- typedef std::vector< [FingerOutput](#) > [FingerOutputSet](#)
- typedef struct [Candidate](#) **Candidate**
- typedef std::vector< [Candidate](#) > [CandidateSet](#)
- typedef struct [ReturnStatus](#) **ReturnStatus**
- typedef tr1::shared_ptr < [SDKInterface](#) > **SDKIptr**

Functions

- std::ostream & [operator<<](#) (std::ostream &s, const [FPVTE2012::FingerOutput](#) &fo)
- std::ostream & [operator<<](#) (std::ostream &s, const [FPVTE2012::StatusCode::Kind](#) &sc)
- std::ostream & [operator<<](#) (std::ostream &s, const [FPVTE2012::ReturnStatus](#) &rs)

C.1.1 Detailed Description

Contains all the structures and functions used by the API.

C.1.2 Typedef Documentation

C.1.2.1 `typedef std::vector<FingerImage> FPVTE2012::FingerImageSet`

Object representing a set of Finger records. Using this object anywhere from one to ten fingerprints will be input for a single test subject.

C.1.2.2 `typedef std::vector<FingerOutput> FPVTE2012::FingerOutputSet`

Object representing a set of Finger output records.

C.1.2.3 `typedef std::vector<Candidate> FPVTE2012::CandidateSet`

Object representing a list of Candidates. This object allows the search function to return a candidate list of 1:L as defined by the evaluation protocol.

C.1.3 Function Documentation

C.1.3.1 `std::ostream& FPVTE2012::operator<< (std::ostream & s, const FPVTE2012::FingerOutput & fo)`

Output stream operator for a [FingerOutput](#) object.

C.1.3.2 `std::ostream& FPVTE2012::operator<< (std::ostream & s, const FPVTE2012::StatusCode::Kind & sc)`

Output stream operator for a [StatusCode](#) object.

C.1.3.3 `std::ostream& FPVTE2012::operator<< (std::ostream & s, const FPVTE2012::ReturnStatus & rs)`

Output stream operator for a [ReturnStatus](#) object.

Appendix D

Class Documentation

D.1 FPVTE2012::Candidate Struct Reference

Object defining format of candidate reporting.

```
#include <fpvte2012.h>
```

Public Attributes

- string **templateID**
- double **similarity**

D.1.1 Detailed Description

Object defining format of candidate reporting.

Each candidate returned for a search subject will report the information defined in this structure. Candidates should be sorted into ascending order of match probability.

Parameters

<i>templateID</i>	The Template ID of the candidate. The ID returned for the candidate must be the same ID that was passed into enrollment finalization.
<i>similarity</i>	The similarity score that the candidate and search templates are from the same subject.

The documentation for this struct was generated from the following file:

- fpvte2012.h

D.2 FPVTE2012::FingerImage Struct Reference

Object containing the fingerprint image and corresponding attributes.

```
#include <fpvte2012.h>
```

Public Attributes

- Finger::Position::Kind **fgp**

- Finger::Impression::Kind **imp**
- tr1::shared_ptr< Image::Raw > **raw_image**
- uint8_t **nfiq**

D.2.1 Detailed Description

Object containing the fingerprint image and corresponding attributes.

The fingerprint image object used to pass the image and attributes to the template extraction process.

Parameters

<i>fgp</i>	Finger position.
<i>imp</i>	Impression type for the fingerprint.
<i>raw_image</i>	Input image data.
<i>nfiq</i>	Image nfiq value with range from 1 (best) ... 5 (worst).

The documentation for this struct was generated from the following file:

- fpvte2012.h

D.3 FPVTE2012::FingerOutput Struct Reference

Object for output data related to an extracted template.

```
#include <fpvte2012.h>
```

Public Attributes

- Finger::Position::Kind **fgp**
- uint32_t **template_size**
- uint8_t **image_quality**
- bool **core_location_present**
- Image::Coordinate **core_location**
- bool **delta_location_present**
- Image::Coordinate **delta_location**

D.3.1 Detailed Description

Object for output data related to an extracted template.

Information need by the NIST driver to store the extracted template into a RecordStore and potentially for use in results analysis.

Parameters

<i>fgp</i>	Finger position.
<i>template_size</i>	The actual size of the extracted template.
<i>image_quality</i>	Image quality computed by the template extraction application. Valid range is 0-100 with 0 being lowest quality.
<i>core_location_present</i>	Whether or not core_location has been set.
<i>core_location</i>	If available, the core location of the fingerprint. This is an x,y pixel coordinate location in the image.
<i>delta_location_present</i>	Whether or not delta_location has been set.
<i>delta_location</i>	If available, the delta location of the fingerprint. This is an x,y pixel coordinate location in the image.

The documentation for this struct was generated from the following file:

- fpvte2012.h

D.4 FPVTE2012::ReturnStatus Struct Reference

A structure to contain information about a failure by the software under test.

```
#include <fpvte2012.h>
```

Public Member Functions

- [ReturnStatus](#) (const [StatusCode::Kind](#) code, const string info="")
Create a [ReturnStatus](#) object.

Public Attributes

- [StatusCode::Kind](#) code
- string info

D.4.1 Detailed Description

A structure to contain information about a failure by the software under test.

An object of this class allows the software to return some information from a function call. The string within this object can be optionally set to provide more information for debugging etc. The status code will be set by the function to Success on success, or one of the other codes on failure. In those cases, processing will proceed with further calls to the function.

Note

If the SDK encounters a non-recoverable error, an exception should be thrown and processing will stop.

D.4.2 Constructor & Destructor Documentation

D.4.2.1 FPVTE2012::ReturnStatus::ReturnStatus (const [StatusCode::Kind](#) code, const string info = " ")

Create a [ReturnStatus](#) object.

Parameters

in	code	The return status code; required.
in	info	The optional information string.

The documentation for this struct was generated from the following file:

- fpvte2012.h

D.5 FPVTE2012::SDKInterface Class Reference

Public Member Functions

- virtual void [getIDs](#) (string &nist_assigned_identifier, string &email_address)=0
Return the identifier and contact email address for the software under test.
- virtual [ReturnStatus](#) [initEnrollmentTemplateExtraction](#) (const string &configuration_directory, const uint32_t num_subjects)=0 throw (Error::Exception)
This function initializes the makeEnrollmentTemplate process and sets all needed parameters.
- virtual [ReturnStatus](#) [makeEnrollmentTemplate](#) (const [FingerImageSet](#) &fingers, Memory::uint8Array &enrollment_template, [FingerOutputSet](#) &output_features)=0 throw (Error::Exception)
This function takes a FingerImageSet and outputs a enrollment template representing the one or more fingers that were in the input FingerImageSet.
- virtual [ReturnStatus](#) [finalizeEnrollment](#) (const string &configuration_directory, const string &enrollment_directory, const uint8_t blade_count, const uint16_t blade_memory, IO::RecordStore &input_templates)=0 throw (Error::Exception)
This function does final processing of the complete set of enrollment templates that will then be used in matching search templates.
- virtual [ReturnStatus](#) [initSearchTemplateExtraction](#) (const string &configuration_directory)=0 throw (Error::Exception)
This function initializes the makeSearchTemplate process and sets all needed parameters.
- virtual [ReturnStatus](#) [makeSearchTemplate](#) (const [FingerImageSet](#) &fingers, Memory::uint8Array &search_template, [FingerOutputSet](#) &output_features)=0 throw (Error::Exception)
This function takes a FingerImageSet and outputs a search template representing one or more fingers. The search template can be produced with a different algorithm than makeEnrollmentTemplate.
- virtual [ReturnStatus](#) [initIdentificationStageOne](#) (const string &configuration_directory, const string &enrollment_directory, const uint8_t blade_number)=0 throw (Error::Exception)
This function initializes identifyTemplateStageOne.
- virtual [ReturnStatus](#) [identifyTemplateStageOne](#) (const string &search_ID, const Memory::uint8Array &search_template, const string &stage1_data_directory)=0 throw (Error::Exception)
This function searches a template against the partial enrollment set selected by the blade_number in initIdentificationStageOne.
- virtual [ReturnStatus](#) [initIdentificationStageTwo](#) (const string &configuration_directory, const string &enrollment_directory)=0 throw (Error::Exception)
This function initializes identifyTemplateStageTwo.
- virtual [ReturnStatus](#) [identifyTemplateStageTwo](#) (const string &search_ID, const string &stage1_data_directory, [CandidateSet](#) &candidates)=0 throw (Error::Exception)
This function takes the results from identifyTemplateStageOne and produces a candidate list for the search subject.

Static Public Member Functions

- static SDKIptr [getSDK](#) ()
Factory function to return a managed pointer to the SDK object.

D.5.1 Member Function Documentation

D.5.1.1 virtual void FPVTE2012::SDKInterface::getIDs (string & nist_assigned_identifier, string & email_address) [pure virtual]

Return the identifier and contact email address for the software under test.

This function retrieves an identifier that the provider must request from NIST and hard wired into the source code. NIST will assign the identifier that will uniquely identify the supplier and the SDK version number.

Parameters

out	<i>nist_assigned_identifier</i>	This string will be the full name of the core library file. For example, if the NIST assigned identifier is "A", the class of participation is "C" and the SDK is the first "fast" * submission, the library name AND string returned by getIDs would * be libFpVTE12_A_C_1_1.a
out	<i>email_address</i>	Point of contact email address. Cannot be the empty string.

D.5.1.2 virtual ReturnStatus FVPTE2012::SDKInterface::initEnrollmentTemplateExtraction (const string & configuration_directory, const uint32_t num_subjects) throw (Error::Exception) [pure virtual]

This function initializes the makeEnrollmentTemplate process and sets all needed parameters.

The function is called once by the NIST application before $n \geq 1$ calls to makeEnrollmentTemplate. The implementation must tolerate execution of multiple instances of the makeEnrollmentTemplate process (each initialized separately) running simultaneously and independently on the same machine and/or across multiple machines.

Parameters

in	<i>configuration_directory</i>	A read-only directory containing vendor-supplied configuration parameters or run-time data files.
in	<i>num_subjects</i>	The total number of subjects that will be used in the enrollment set.

Returns

The object containing a required status code and optional information string.

Exceptions

<i>Error::Exception</i>	There was an error processing this request, and the exception string may contain additional information.
-------------------------	--

D.5.1.3 virtual ReturnStatus FVPTE2012::SDKInterface::makeEnrollmentTemplate (const FingerImageSet & fingers, Memory::uint8Array & enrollment_template, FingerOutputSet & output_features) throw (Error::Exception) [pure virtual]

This function takes a FingerImageSet and outputs a enrollment template representing the one or more fingers that were in the input FingerImageSet.

The memory for the template is managed in the uint8Array (an AutoArray) object. This routine should not perform memory allocation but can resize the AutoArray if more space is needed.

Note

This method should call AutoArray's resize() method before returning in order to indicate the true size of enrollment_template.

Parameters

in	<i>fingers</i>	A set of finger images. The implementation will have to adjust to the number of available fingerprints based on the dataset being used. For example 10 rolled or 2 index plain impressions.
out	<i>enrollment_template</i>	The template to be added to the enrollment set, extracted from the finger images. The format is not regulated.
out	<i>output_features</i>	Additional information for the fingers, produced by the SDK. This information will be used in final results analysis. The number of features can be different than the number of finger images, when segmentation is done, for example.

Returns

The object containing a required status code and optional information string.

Exceptions

<i>Error::Exception</i>	There was an error processing this request, and the exception string may contain additional information.
-------------------------	--

D.5.1.4 `virtual ReturnStatus FPVTE2012::SDKInterface::finalizeEnrollment (const string & configuration_directory, const string & enrollment_directory, const uint8_t blade_count, const uint16_t blade_memory, IO::RecordStore & input_templates) throw (Error::Exception) [pure virtual]`

This function does final processing of the complete set of enrollment templates that will then be used in matching search templates.

The finalization step must prepare the enrolled templates to be distributed across a number of blades. The enrollment directory will then have read-only access for stages 1 and 2 of the identification process.

Parameters

in	<i>configuration_directory</i>	A read-only directory containing vendor-supplied configuration
in	<i>enrollment_directory</i>	The top-level directory in which all enrollment data will reside. After this finalization step the directory and its contents will become read-only. The directory is initially empty. Access permission will be read-write and the application can populate this folder as needed. Additionally, the file system does not perform well with the creation of millions of small files, so the application should consolidate templates into some sort of database file.
in	<i>blade_count</i>	The number of blades the enrollment set will be spread across. It is up to the implementation to determine how best to spread the enrolled templates across the blades in order to get best performance.
in	<i>blade_memory</i>	Amount of memory available on each blade in gigabytes.
in	<i>input_templates</i>	The input RecordStore containing the enrolled templates, opened IO::READONLY.

Returns

The object containing a required status code and optional information string.

Exceptions

<i>Error::Exception</i>	There was an error processing this request, and the exception string may contain additional information.
-------------------------	--

D.5.1.5 `virtual ReturnStatus FPVTE2012::SDKInterface::initSearchTemplateExtraction (const string & configuration_directory) throw (Error::Exception) [pure virtual]`

This function initializes the makeSearchTemplate process and sets all needed parameters.

The function is called once by the NIST application before $n \geq 1$ calls to makeSearchTemplate. The implementation must tolerate execution of multiple instances of the makeSearchTemplate process running simultaneously and independently on the same machine and/or across multiple machines.

Parameters

in	<i>configuration_directory</i>	A read-only directory containing vendor-supplied configuration
----	--------------------------------	--

Returns

The object containing a required status code and optional information string.

Exceptions

<i>Error::Exception</i>	There was an error processing this request, and the exception string may contain additional information.
-------------------------	--

D.5.1.6 `virtual ReturnStatus FVPTE2012::SDKInterface::makeSearchTemplate (const FingerImageSet & fingers, Memory::uint8Array & search_template, FingerOutputSet & output_features) throw (Error::Exception) [pure virtual]`

This function takes a FingerImageSet and outputs a search template representing one or more fingers. The search template can be produced with a different algorithm than makeEnrollmentTemplate.

The memory for the template is managed in the uint8Array (an AutoArray) object. This routine should not perform memory allocation but can resize the AutoArray if more space is needed.

Note

This method should call AutoArray's `resize()` method before returning in order to indicate the true size of `search_template`.

Parameters

in	<i>fingers</i>	A set of finger images. The implementation will have to adjust to the number of available fingerprints based on the dataset being used. For example 10 rolled or 2 index plain impressions.
in	<i>fingers</i>	A set of finger images. The implementation will have to adjust to the number of available fingerprints based on the dataset being used. For example 10 rolled or 2 index plain impressions.
out	<i>search_template</i>	The search template, extracted from the finger images. The format is not regulated. The memory is allocated in the AutoArray object.
out	<i>output_features</i>	Additional information for the fingers, produced by the SDK. This information will be used in final results analysis. The number of features can be different than the number of finger images, when segmentation is done, for example.

Returns

The object containing a required status code and optional information string.

Exceptions

<i>Error::Exception</i>	There was an error processing this request, and the exception string may contain additional information.
-------------------------	--

D.5.1.7 `virtual ReturnStatus FVPTE2012::SDKInterface::initIdentificationStageOne (const string & configuration_directory, const string & enrollment_directory, const uint8_t blade_number) throw (Error::Exception) [pure virtual]`

This function initializes `identifyTemplateStageOne`.

The function will be called to initialize each blade that will contain a portion of the enrolled templates. The number of blades will be the same as used in `finalizeEnrollment`.

Parameters

in	<i>configuration_directory</i>	A read-only directory containing vendor-supplied configuration
in	<i>enrollment_directory</i>	The top-level directory in which all finalized enrollment data resides. The directory will have read-only access.
in	<i>blade_number</i>	Blade number from blades in <code>finalizeEnrollment</code> that is being initialized. This parameter lets the process know which piece of the enrolled templates to load into memory. Blades are numbered 0 to B - 1.

Returns

The object containing a required status code and optional information string.

Exceptions

<i>Error::Exception</i>	There was an error processing this request, and the exception string may contain additional information.
-------------------------	--

D.5.1.8 `virtual ReturnStatus FPVTE2012::SDKInterface::identifyTemplateStageOne (const string & search_ID, const Memory::uint8Array & search_template, const string & stage1_data_directory) throw (Error::Exception) [pure virtual]`

This function searches a template against the partial enrollment set selected by the `blade_number` in `initIdentificationstageOne`.

Parameters

in	<i>search_ID</i>	The ID of the search template. This ID does not identify subject, but is merely an identifier used to distinguish different searches performed by the system. It will be used as the input to <code>identifyTemplateStageTwo</code> .
in	<i>search_template</i>	A template from <code>makeSearchTemplate</code> . The size is given by the <code>AutoArray</code> object.
in	<i>stage1_data_directory</i>	This directory will have read-write access. The output information from <code>identifyTemplateStageOne</code> that is needed in <code>identifyTemplateStageTwo</code> is written in this directory. This directory will be unique for each search performed.

Returns

The object containing a required status code and optional information string.

Exceptions

<i>Error::Exception</i>	There was an error processing this request, and the exception string may contain additional information.
-------------------------	--

D.5.1.9 `virtual ReturnStatus FPVTE2012::SDKInterface::initIdentificationStageTwo (const string & configuration_directory, const string & enrollment_directory) throw (Error::Exception) [pure virtual]`

This function initializes `identifyTemplateStageTwo`.

This second stage of identification uses the output results from `identifyTemplateStageOne` to produce a candidate list for the search subject.

Parameters

in	<i>configuration_directory</i>	A read-only directory containing vendor-supplied configuration
in	<i>enrollment_directory</i>	The top-level directory in which all finalized enrolled data resides. The directory will have read-only access.

Returns

The object containing a required status code and optional information string.

Exceptions

<i>Error::Exception</i>	There was an error processing this request, and the exception string may contain additional information.
-------------------------	--

D.5.1.10 `virtual ReturnStatus FPVTE2012::SDKInterface::identifyTemplateStageTwo (const string & search_ID, const string & stage1_data_directory, CandidateSet & candidates) throw (Error::Exception) [pure virtual]`

This function takes the results from `identifyTemplateStageOne` and produces a candidate list for the search subject.

Parameters

in	<i>search_ID</i>	The ID of the search template. This ID does not identify subject, but is merely an identifier used to distinguish different searches performed by the system.
in	<i>stage1_data_directory</i>	This directory will have read-only access and contains all the stored output data from the <code>identifyTemplateStageOne</code> processes for the search subject.
out	<i>candidates</i>	The candidate list returned from <code>identifyTemplateStageTwo</code> .

Returns

The object containing a required status code and optional information string.

Exceptions

<i>Error::Exception</i>	There was an error processing this request, and the exception string may contain additional information.
-------------------------	--

D.5.1.11 `static SDKIptr FPVTE2012::SDKInterface::getSDK () [static]`

Factory function to return a managed pointer to the SDK object.

This function is implemented by the SDK library and must return a managed pointer to the SDK object.

The documentation for this class was generated from the following file:

- fpvte2012.h

D.6 FPVTE2012::StatusCode Class Reference

Public Types

- enum `Kind` { `Success` = 0, `ImageSizeNotSupported` = 1, `TemplateTypeNotSupported` = 2, `FailedToExtract` = 3, `FailedToMatch` = 4, `FailedToParseInput` = 5, `Vendor` = 6 }

A class that contains an enumeration which defines the set of status codes.

D.6.1 Member Enumeration Documentation

D.6.1.1 enum FPVTE2012::StatusCode::Kind

A class that contains an enumeration which defines the set of status codes.

The status codes that are returned from a function call:

Enumerator:

Success Successful completion

ImageSizeNotSupported Image size too small or large

TemplateTypeNotSupported Unsupported template type

FailedToExtract Could not extract template from image

FailedToMatch Could not match samples

Vendor Vendor-defined error

The documentation for this class was generated from the following file:

- fpvte2012.h